



IC

IMMOBILIARE CHIANTIGIANA di Filipponi  
Lauro

AGENCY — LASTRA A SIGNA

CARMIGNANO — TOSCANA

Farmhouse with  
land divided into  
three housing units

€ 950.000

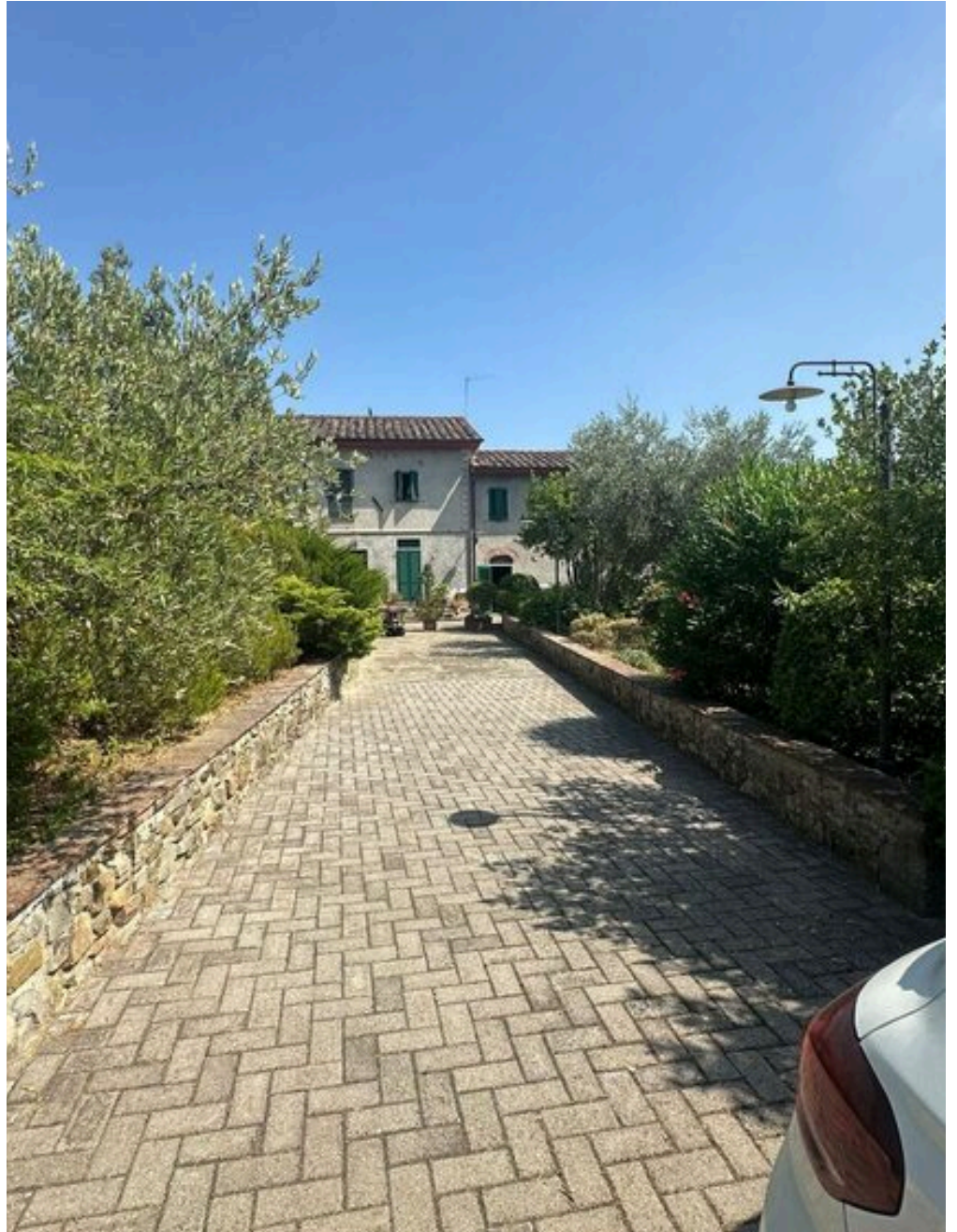
PRICE

380 m<sup>2</sup>

SQUARE METRES

5

ROOMS





## DESCRIPTION


# Farmhouse with land divided into three housing units


Near Carmignano on the hills bordering Florence and Prato, in a panoramic and quiet position, for sale farmhouse free on three sides with surrounding land of about 24,000 square meters used as olive grove. The property is currently divided into three residential units each with independent entrance, plus a storage room. They are composed as follows: -Apartment 1 on the ground floor large entrance hall, living room, living room with fireplace, kitchen with wood-burning oven with exit to large panoramic tergalon resede, on the second floor two bedrooms, large bathroom, in the semi-basement

three rooms with predisposition for bathroom and exit to tergalon resede, - Apartment 2 living room, kitchen, hallway, two bathrooms, two bedrooms with exit to tergalon resede, -Apartment 3 kitchen living room, hallway, two bedrooms, bathroom. Also part of the property is a large warehouse adjacent to apartment 3, large parking lot, paved resedi around the property, large garden, agricultural land used as an olive grove with a well. Given the panoramic location and close to major roads and cities, the property lends itself to make a B&B and tourist rentals.


 **380 m<sup>2</sup>**  
AREA


 **5**  
ROOMS


 **4**  
BATHROOMS


 **€ 950.000**  
PRICE


## FEATURES

 COMFORTABLE TO THE SERVICES

 GARDEN

 SEPARABLE

 LAND

 PANORAMIC VIEW



IC  
IMMOBILIARE CHIANTIGIANA  
di Filipponi Lauro

## CONTACTS

### Book a visit

Contact us for more information  
or to schedule a viewing.

 PHONE  
**3288937436**

 EMAIL  
**info@immobiliarechiantigiana.it**

 ADDRESS  
**VIA CHIANTIGIANA, 68, LASTRA A SIGNA, FIRENZE**